

Courtesy Of Taylor J Hack Of RE/MAX River City

\$375,000 - 5315 15 Avenue, Edmonton

MLS® #E4432420

\$375,000

3 Bedroom, 2.50 Bathroom, 1,703 sqft
Single Family on 0.00 Acres

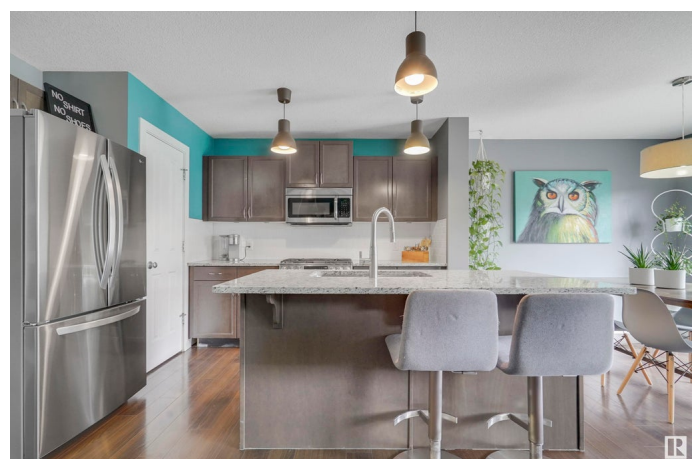
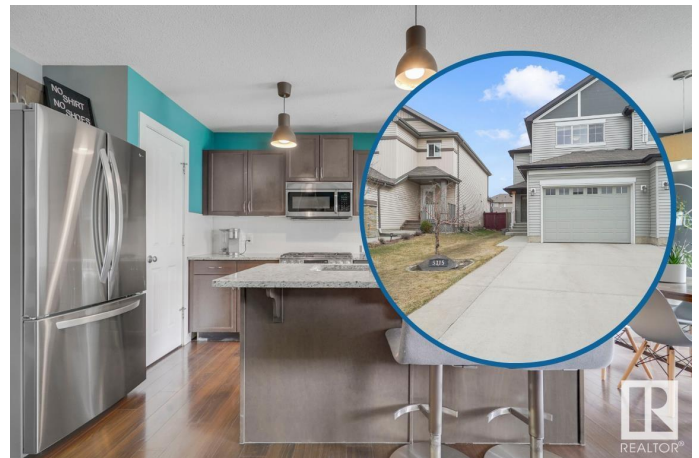
Walker, Edmonton, AB

This move-in-ready 2-Storey duplex is over 1,700 sq.ft. in Walker & offers a stylish, functional layout with brand new carpet & California Closets. Visit the REALTOR's website for more information. The open-concept main floor connects the kitchen & living areas seamlessly—ideal for entertaining. A spacious primary suite with ensuite & walk-in closet, plus the convenience of upstairs laundry right where the laundry happens. The finished basement adds valuable flex space for a home office, rec room, or play area. Plus the attached garage offers enough room for your car, bikes, tools, or toys—with a widened driveway for convenience. Located just 3 minutes to the Henday, 12 minutes to the airport, & close to schools like Ellerslie Campus, this home is nestled in a family-friendly community near Walker park & playground, as short drive from shopping at South Edmonton Common. A great opportunity to put down roots in a growing southside neighbourhood!

Built in 2014

Essential Information

MLS® #	E4432420
Price	\$375,000
Bedrooms	3



Bathrooms	2.50
Full Baths	2
Half Baths	1
Square Footage	1,703
Acres	0.00
Year Built	2014
Type	Single Family
Sub-Type	Half Duplex
Style	2 Storey
Status	Active

Community Information

Address	5315 15 Avenue
Area	Edmonton
Subdivision	Walker
City	Edmonton
County	ALBERTA
Province	AB
Postal Code	T6X 1S2

Amenities

Amenities	Deck, Smart/Program. Thermostat
Parking Spaces	2
Parking	Single Garage Attached

Interior

Interior Features	ensuite bathroom
Appliances	Dishwasher-Built-In, Dryer, Garage Control, Garage Opener, Microwave Hood Fan, Refrigerator, Stove-Gas, Washer, Window Coverings
Heating	Forced Air-1, Natural Gas
Stories	3
Has Basement	Yes
Basement	Full, Finished

Exterior

Exterior	Wood, Vinyl
Exterior Features	Airport Nearby, Back Lane, Flat Site, Public Transportation, Schools, Shopping Nearby
Roof	Asphalt Shingles

Construction	Wood, Vinyl
Foundation	Concrete Perimeter

School Information

Elementary	Ellerslie Campus School
Middle	Ellerslie Campus School
High	Elder Dr. Francis Whiskey

Additional Information

Date Listed	April 24th, 2025
Days on Market	1
Zoning	Zone 53

DATA IS DEEMED RELIABLE BUT IS NOT GUARANTEED ACCURATE BY THE REALTORS® ASSOCIATION OF EDMONTON. COPYRIGHT 2025 BY THE REALTORS® ASSOCIATION OF EDMONTON. ALL RIGHTS RESERVED. Trademarks are owned or controlled by the Canadian Real Estate Association (CREA) and identify real estate professionals who are members of CREA (REALTOR®, REALTORS®) and/or the quality of services they provide (MLS®, Multiple Listing Service®)

Listing information last updated on April 24th, 2025 at 7:02pm MDT