

## \$319,900 - 9 249 Edwards Drive, Edmonton

MLS® #E4432364

**\$319,900**

3 Bedroom, 2.50 Bathroom, 1,097 sqft

Condo / Townhouse on 0.00 Acres

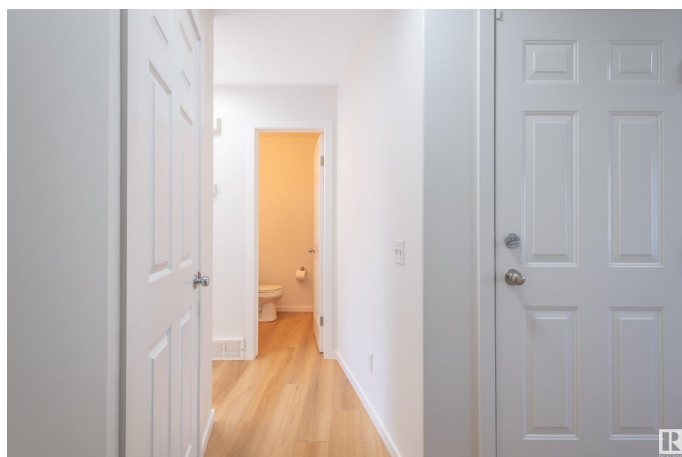
Ellerslie, Edmonton, AB

This townhome has brand new flooring, fresh paints, kitchen, bathroom and powder rooms are renovated and this home is a turn key, ready to move-in for you. This updated 2 Storey townhouse in Sandstone Estates has enough room for your family. With 3 bedrooms, 2 full bathrooms, 1 half bathroom and has a finished basement. This home is perfect for anyone looking for more space but less exterior maintenance. This home comes with a single attached garage and double car driveway so there is enough parking space for everyone. Comparatively low condo fee, steps away from shopping centre, public transportation and major driving routes and location is unbeatable!

Built in 2003

### Essential Information

MLS® #	E4432364
Price	\$319,900
Bedrooms	3
Bathrooms	2.50
Full Baths	2
Half Baths	1
Square Footage	1,097
Acres	0.00
Year Built	2003



Type	Condo / Townhouse
Sub-Type	Townhouse
Style	2 Storey
Status	Active

### Community Information

Address	9 249 Edwards Drive
Area	Edmonton
Subdivision	Ellerslie
City	Edmonton
County	ALBERTA
Province	AB
Postal Code	T6X 1G2

### Amenities

Amenities	See Remarks
Parking	Single Garage Attached

### Interior

Appliances	Dishwasher-Built-In, Dryer, Hood Fan, Refrigerator, Stove-Electric, Washer
Heating	Forced Air-1, Natural Gas
Stories	3
Has Basement	Yes
Basement	Full, Finished

### Exterior

Exterior	Wood, Vinyl
Exterior Features	Airport Nearby, Playground Nearby, Public Transportation, Schools, Shopping Nearby
Roof	Asphalt Shingles
Construction	Wood, Vinyl
Foundation	Concrete Perimeter

### Additional Information

Date Listed	April 24th, 2025
Zoning	Zone 53
Condo Fee	\$272

DATA IS DEEMED RELIABLE BUT IS NOT GUARANTEED ACCURATE BY THE REALTORS® ASSOCIATION OF EDMONTON. COPYRIGHT 2025 BY THE REALTORS® ASSOCIATION OF EDMONTON. ALL RIGHTS

RESERVED.Trademarks are owned or controlled by the Canadian Real Estate Association (CREA) and identify real estate professionals who are members of CREA (REALTOR®, REALTORS®) and/or the quality of services they provide (MLS®, Multiple Listing Service®)

Listing information last updated on April 24th, 2025 at 6:17am MDT