

# \$675,000 - 1315 13 Avenue, Edmonton

MLS® #E4429910

**\$675,000**

4 Bedroom, 3.00 Bathroom, 2,156 sqft

Single Family on 0.00 Acres

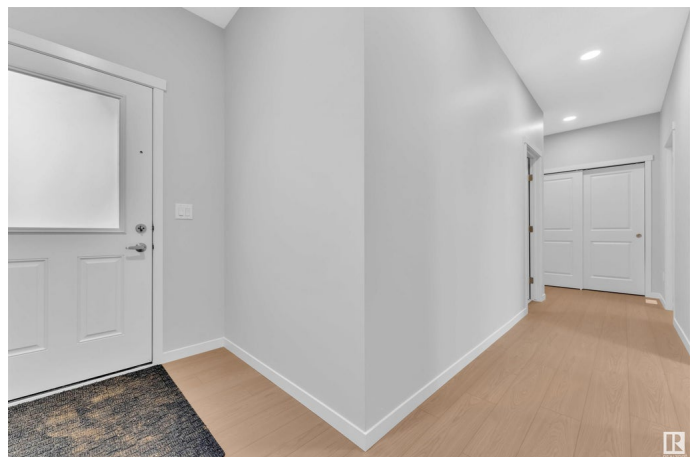
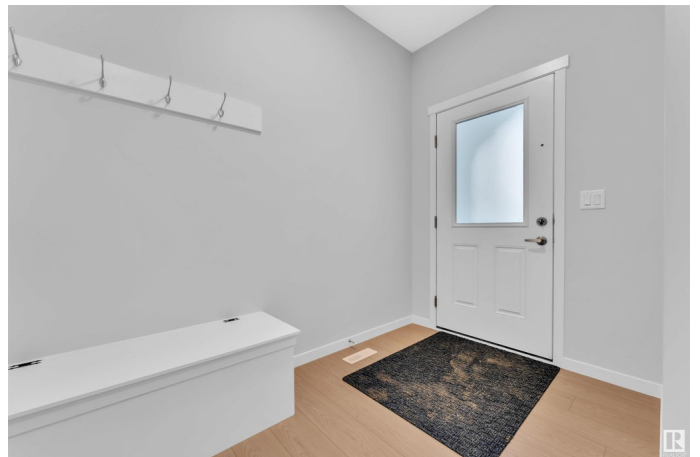
Aster, Edmonton, AB

Welcome to this brand-new, never-lived-in 2,156 sqft two-storey home in the desirable Aster community! The main floor features a stunning open-to-above great room, a cozy breakfast nook, and a modern gourmet chef's kitchen. You'll also find a versatile bedroom/den/office with a full bathroom, ideal for guests or multi-generational living. Upstairs offers a spacious bonus room, a large owner's suite with a 5-piece ensuite and walk-in closet, plus two additional bedrooms, a full 4-piece bathroom, and a convenient laundry room. The basement, with a separate entrance and bathroom rough-in, is ready for your personal touches. The double attached garage and proximity to parks and premium amenities make this home an ideal choice. Don't miss this incredible opportunity!

Built in 2025

## Essential Information

MLS® #	E4429910
Price	\$675,000
Bedrooms	4
Bathrooms	3.00
Full Baths	3
Square Footage	2,156
Acres	0.00



Year Built	2025
Type	Single Family
Sub-Type	Detached Single Family
Style	2 Storey
Status	Active

### **Community Information**

Address	1315 13 Avenue
Area	Edmonton
Subdivision	Aster
City	Edmonton
County	ALBERTA
Province	AB
Postal Code	T6T 2S7

### **Amenities**

Amenities	See Remarks
Parking Spaces	4
Parking	Double Garage Attached

### **Interior**

Interior Features	ensuite bathroom
Appliances	Garage Control, Garage Opener
Heating	Forced Air-1, Natural Gas
Stories	2
Has Basement	Yes
Basement	Full, Unfinished

### **Exterior**

Exterior	Wood, Vinyl
Exterior Features	Public Swimming Pool, Schools, Shopping Nearby, See Remarks
Roof	Asphalt Shingles
Construction	Wood, Vinyl
Foundation	Concrete Perimeter

### **Additional Information**

Date Listed	April 9th, 2025
Days on Market	12
Zoning	Zone 30

DATA IS DEEMED RELIABLE BUT IS NOT GUARANTEED ACCURATE BY THE REALTORS® ASSOCIATION OF EDMONTON. COPYRIGHT 2025 BY THE REALTORS® ASSOCIATION OF EDMONTON. ALL RIGHTS RESERVED. Trademarks are owned or controlled by the Canadian Real Estate Association (CREA) and identify real estate professionals who are members of CREA (REALTOR®, REALTORS®) and/or the quality of services they provide (MLS®, Multiple Listing Service®)

Listing information last updated on April 21st, 2025 at 9:17pm MDT