

\$330,000 - 140 655 Tamarack Road, Edmonton

MLS® #E4429661

\$330,000

3 Bedroom, 2.50 Bathroom, 1,400 sqft

Condo / Townhouse on 0.00 Acres

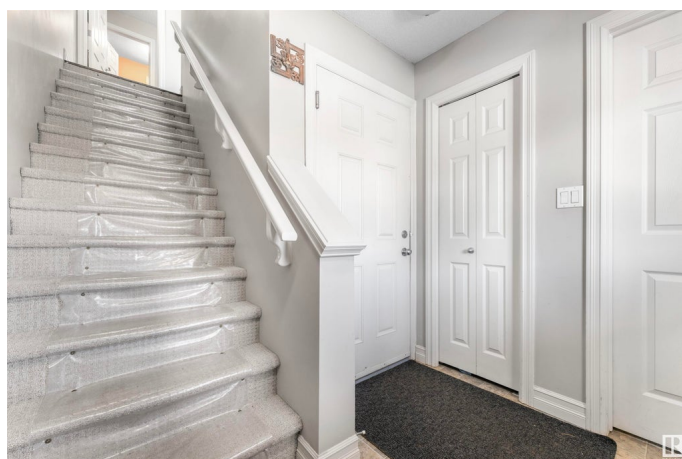
Tamarack, Edmonton, AB

ATTENTION INVESTORS & FIRST-TIME HOME BUYERS! Welcome to this beautiful 3-bedroom, 2.5-bathroom, three-story townhouse with a 20ft wide DOUBLE-ATTACHED garage in Tamarack. This home offers a perfect blend of comfort, luxury, and style. The spacious living and dining areas are filled with natural light, ideal for both relaxation and entertaining. The upper level features 3 bright bedrooms, including a master suite with a 3-piece en-suite and walk-in closet. Enjoy upgraded stainless steel appliances and a brand-new Combi boiler with a 10-year warranty. Located near the Meadows Community Rec Centre, Tamarack Shopping Centre, Walmart, Superstore, ETS Transit, Landmark Theatre, parks, schools, and major roads like the Anthony Henday and Whitemud Freeway.

Built in 2012

Essential Information

MLS® #	E4429661
Price	\$330,000
Bedrooms	3
Bathrooms	2.50
Full Baths	2
Half Baths	1
Square Footage	1,400



Acres	0.00
Year Built	2012
Type	Condo / Townhouse
Sub-Type	Townhouse
Style	3 Storey
Status	Active

Community Information

Address	140 655 Tamarack Road
Area	Edmonton
Subdivision	Tamarack
City	Edmonton
County	ALBERTA
Province	AB
Postal Code	T6T 0N4

Amenities

Amenities	Front Porch
Parking	Double Garage Attached

Interior

Interior Features	ensuite bathroom
Appliances	Dishwasher-Built-In, Dryer, Garage Control, Garage Opener, Microwave Hood Fan, Stove-Electric, Washer, Window Coverings
Heating	Forced Air-1, Natural Gas
Stories	3
Has Basement	Yes
Basement	None, No Basement

Exterior

Exterior	Wood, Stone, Vinyl
Exterior Features	See Remarks
Roof	Asphalt Shingles
Construction	Wood, Stone, Vinyl
Foundation	Concrete Perimeter

Additional Information

Date Listed	April 8th, 2025
Days on Market	17

Zoning	Zone 30
Condo Fee	\$265

DATA IS DEEMED RELIABLE BUT IS NOT GUARANTEED ACCURATE BY THE REALTORS® ASSOCIATION OF EDMONTON. COPYRIGHT 2025 BY THE REALTORS® ASSOCIATION OF EDMONTON. ALL RIGHTS RESERVED. Trademarks are owned or controlled by the Canadian Real Estate Association (CREA) and identify real estate professionals who are members of CREA (REALTOR®, REALTORS®) and/or the quality of services they provide (MLS®, Multiple Listing Service®)

Listing information last updated on April 24th, 2025 at 11:17pm MDT