

Courtesy Of Cody C LeClair Of RE/MAX River City

\$284,900 - 1395 Hermitage Road, Edmonton

MLS® #E4429636

\$284,900

3 Bedroom, 1.50 Bathroom, 1,603 sqft
Condo / Townhouse on 0.00 Acres

Canon Ridge, Edmonton, AB

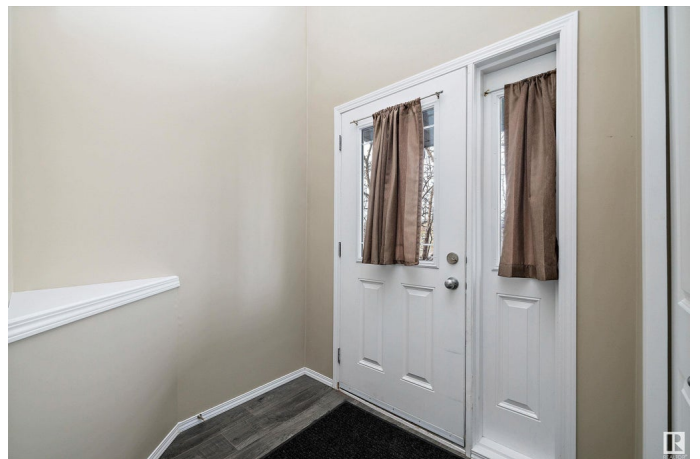
Welcome home to this 3-BEDROOM, 1.5-bath,
END UNIT townhome in Canon Ridge!

Located in the impeccably maintained Hermitage View community and offering over of 1,600 sq ft developed living space. This well laid out home is bright and spacious with a ton of natural light! The main floor features a family room with GAS FIREPLACE, storage space and laundry. The second level has a large open kitchen with lots of cabinet and counter space for family meal prep! There is a breakfast bar and EAT-IN dining, which is surrounded by windows! The upper level offers 3 bedrooms, each with large closets. There is a spacious 4-piece main bathroom as well. This home is just STEPS to beautiful Hermitage park with its paths, fishing, and outdoor space, and provides easy access to the Anthony Henday and Yellowhead. Start Packing

Built in 2007

Essential Information

MLS® #	E4429636
Price	\$284,900
Bedrooms	3
Bathrooms	1.50
Full Baths	1
Half Baths	1



Square Footage	1,603
Acres	0.00
Year Built	2007
Type	Condo / Townhouse
Sub-Type	Townhouse
Style	2 Storey
Status	Active

Community Information

Address	1395 Hermitage Road
Area	Edmonton
Subdivision	Canon Ridge
City	Edmonton
County	ALBERTA
Province	AB
Postal Code	T5A 4S1

Amenities

Amenities	See Remarks
Parking	Single Garage Attached

Interior

Appliances	Dishwasher-Built-In, Dryer, Garage Control, Garage Opener, Microwave Hood Fan, Refrigerator, Stove-Electric, Washer, Window Coverings
Heating	Forced Air-1, Natural Gas
Stories	2
Has Basement	Yes
Basement	None, No Basement

Exterior

Exterior	Wood, Vinyl
Exterior Features	Golf Nearby, Landscaped, Park/Reserve, Public Transportation, Schools, Shopping Nearby
Roof	Asphalt Shingles
Construction	Wood, Vinyl
Foundation	Concrete Perimeter

Additional Information

Date Listed	April 7th, 2025
-------------	-----------------

Days on Market	14
Zoning	Zone 35
Condo Fee	\$313

DATA IS DEEMED RELIABLE BUT IS NOT GUARANTEED ACCURATE BY THE REALTORS® ASSOCIATION OF EDMONTON. COPYRIGHT 2025 BY THE REALTORS® ASSOCIATION OF EDMONTON. ALL RIGHTS RESERVED. Trademarks are owned or controlled by the Canadian Real Estate Association (CREA) and identify real estate professionals who are members of CREA (REALTOR®, REALTORS®) and/or the quality of services they provide (MLS®, Multiple Listing Service®)

Listing information last updated on April 21st, 2025 at 7:32pm MDT