

# \$639,888 - 5075 Dewolf Road, Edmonton

MLS® #E4428750

**\$639,888**

3 Bedroom, 2.50 Bathroom, 2,108 sqft

Single Family on 0.00 Acres

Griesbach, Edmonton, AB

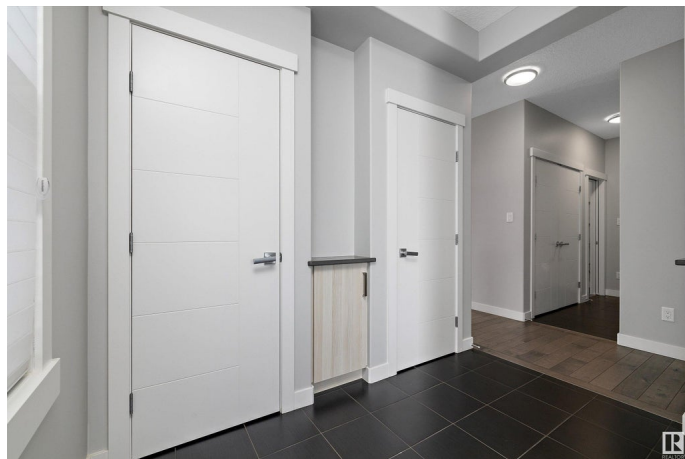
Extensively upgraded 2-storey in the award winning community of Griesbach! Built by Coventry Homes in 2015, this single owner property ft. 3 bedrooms, 2.5 bathrooms and a double attached garage. Enter and enjoy the open concept floor plan complemented by ceramic tile, premium hardwood, 9' ceilings, central A/C and South-facing windows. The culinary enthusiast will appreciate the contemporary two-tone kitchen offering: S/S appliances, Capital Cooking gas range, hood fan, quartz c-tops, RO system and walkthrough pantry. The welcoming living room is framed by a tile surround gas F/P & large windows. Entertain in the dining room that leads to your deck w/ BBQ hookup. Upstairs, you'll find a primary retreat ft. a 5pc ensuite w/ a large soaker tub and a W/I closet w/ California Closets organizers. Additionally, there's 2 spacious junior rooms, 4pc main bath, large bonus room and convenient laundry room w/ utility sink. Extras: custom Hunter Douglas blinds, 2 stage HE furnace and Tankless HW. Virtually staged.

Built in 2014

## Essential Information

MLS® # E4428750

Price \$639,888



Bedrooms	3
Bathrooms	2.50
Full Baths	2
Half Baths	1
Square Footage	2,108
Acres	0.00
Year Built	2014
Type	Single Family
Sub-Type	Detached Single Family
Style	2 Storey
Status	Active

### **Community Information**

Address	5075 Dewolf Road
Area	Edmonton
Subdivision	Griesbach
City	Edmonton
County	ALBERTA
Province	AB
Postal Code	T5E 6R5

### **Amenities**

Amenities	Air Conditioner, Ceiling 9 ft., Closet Organizers, Deck, Vinyl Windows, Natural Gas BBQ Hookup, Natural Gas Stove Hookup
Parking	Double Garage Attached

### **Interior**

Interior Features	ensuite bathroom
Appliances	Air Conditioning-Central, Dishwasher-Built-In, Dryer, Garage Control, Garage Opener, Hood Fan, Stove-Gas, Washer, Window Coverings
Heating	Forced Air-1, Natural Gas
Stories	2
Has Basement	Yes
Basement	Full, Unfinished

### **Exterior**

Exterior	Wood, Stone, Vinyl
Exterior Features	Fenced, Flat Site, Landscaped, Level Land, Schools, Shopping Nearby
Roof	Asphalt Shingles

Construction	Wood, Stone, Vinyl
Foundation	Concrete Perimeter

### **School Information**

Elementary	Major-General Griesbach
Middle	Major-General Griesbach
High	Queen Elizabeth School

### **Additional Information**

Date Listed	April 3rd, 2025
Days on Market	8
Zoning	Zone 27

DATA IS DEEMED RELIABLE BUT IS NOT GUARANTEED ACCURATE BY THE REALTORS® ASSOCIATION OF EDMONTON. COPYRIGHT 2025 BY THE REALTORS® ASSOCIATION OF EDMONTON. ALL RIGHTS RESERVED. Trademarks are owned or controlled by the Canadian Real Estate Association (CREA) and identify real estate professionals who are members of CREA (REALTOR®, REALTORS®) and/or the quality of services they provide (MLS®, Multiple Listing Service®)

Listing information last updated on April 11th, 2025 at 8:17am MDT