

\$259,900 - 16519 100 Street, Edmonton

MLS® #E4427842

\$259,900

3 Bedroom, 1.50 Bathroom, 1,150 sqft

Condo / Townhouse on 0.00 Acres

Lorelei, Edmonton, AB

LOW CONDO FEES in a fantastic location!!

This spacious townhome in Lorelei is truly
â€œmove-in readyâ€œ, perfect for the first time
buyer or investor. **BEAUTIFULLY**

RENOVATED throughout, featuring 3
bedrooms 2 baths, all new doors, flooring, trim,
electrical fixtures & outlets, tiling in bathroom
and a finished basement â€œ not a detail has
been missed. The brand new kitchen has
gorgeous quartz countertops, modern
cabinetry, **BRAND NEW** high end s/s
appliances and elegant subway tile
backsplash. Open to the bright living and
dining room which has a custom feature wall,
tons of natural light from a large picture
window and cozy fireplace. The upper level
has three generous sized bedrooms and a
fabulous new family bathroom with high end
tile, modern fixtures & **JACUZZI TUB**. The
basement is finished with a massive family
room providing lots more living space to enjoy.

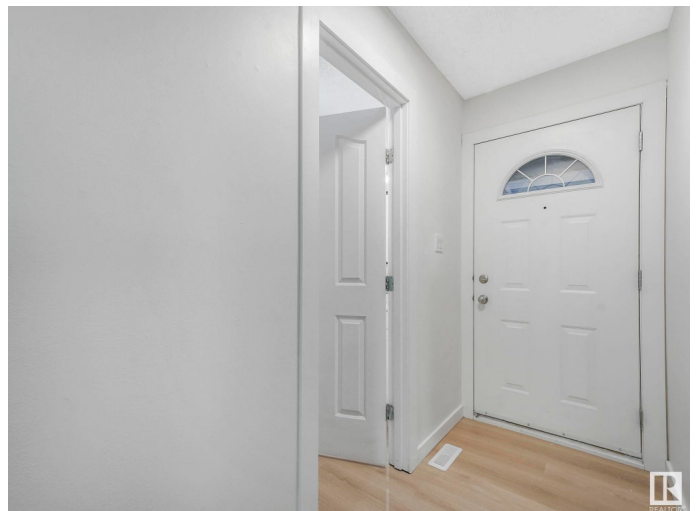
Close to great schools, parks, major shopping
and biking trails â€œ this family home is
PERFECT! Tons of street parking for visitors.

Built in 1982

Essential Information

MLS® # E4427842

Price \$259,900



Bedrooms	3
Bathrooms	1.50
Full Baths	1
Half Baths	1
Square Footage	1,150
Acres	0.00
Year Built	1982
Type	Condo / Townhouse
Sub-Type	Townhouse
Style	2 Storey
Status	Active

Community Information

Address	16519 100 Street
Area	Edmonton
Subdivision	Lorelei
City	Edmonton
County	ALBERTA
Province	AB
Postal Code	T5X 5H4

Amenities

Amenities	Detectors Smoke, No Animal Home, No Smoking Home, Parking-Visitor, Vinyl Windows
Parking	Stall

Interior

Appliances	Dishwasher-Built-In, Dryer, Refrigerator, Stove-Electric, Washer
Heating	Forced Air-1, Natural Gas
Fireplace	Yes
Fireplaces	Brick Facing
Stories	3
Has Basement	Yes
Basement	Full, Finished

Exterior

Exterior	Wood, Stucco, Vinyl
Exterior Features	Fenced, Playground Nearby, Public Transportation, Schools, Shopping Nearby

Roof	Asphalt Shingles
Construction	Wood, Stucco, Vinyl
Foundation	Concrete Perimeter

Additional Information

Date Listed	March 27th, 2025
Days on Market	23
Zoning	Zone 27
Condo Fee	\$260

DATA IS DEEMED RELIABLE BUT IS NOT GUARANTEED ACCURATE BY THE REALTORS® ASSOCIATION OF EDMONTON. COPYRIGHT 2025 BY THE REALTORS® ASSOCIATION OF EDMONTON. ALL RIGHTS RESERVED.Trademarks are owned or controlled by the Canadian Real Estate Association (CREA) and identify real estate professionals who are members of CREA (REALTOR®, REALTORS®) and/or the quality of services they provide (MLS®, Multiple Listing Service®)

Listing information last updated on April 19th, 2025 at 4:17am MDT