

Courtesy Of Megan Benoit and Fadi Georgi Of MaxWell Polaris

# \$474,888 - 1355 Keswick Drive, Edmonton

MLS® #E4426606

**\$474,888**

3 Bedroom, 2.50 Bathroom, 1,448 sqft  
Single Family on 0.00 Acres

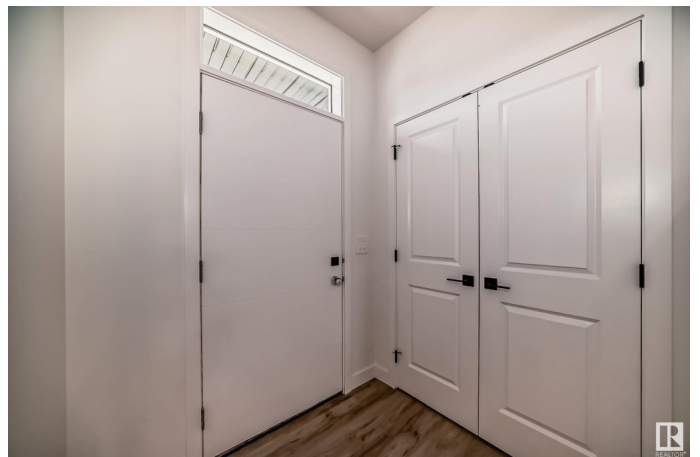
Keswick Area, Edmonton, AB

NO CONDO FEES! This beautifully designed END UNIT townhome offers contemporary living with a detached double garage in the sought-after community of Keswick, just steps from parks, trails, and amenities. Separate SIDE ENTRANCE with legal suite framing & rough-ins completed. Enter the open-concept main floor designed for a modern family with a kitchen that showcases 3cm quartz countertops, water line to fridge, full-height backsplash, and 42" light wood cabinetry. The upper floor features a versatile flex space, convenient laundry, two well-sized bedrooms, and a primary suite with a walk-in closet and a 4-piece ensuite. Front and back landscaping are included, along with a \$3,000 appliance credit. Currently under construction with an anticipated completion end of June. Photos are from a previous unit and interior colors are represented. HOA TBD

Built in 2024

## Essential Information

MLS® #	E4426606
Price	\$474,888
Bedrooms	3
Bathrooms	2.50
Full Baths	2
Half Baths	1



Square Footage	1,448
Acres	0.00
Year Built	2024
Type	Single Family
Sub-Type	Residential Attached
Style	2 Storey
Status	Active

### **Community Information**

Address	1355 Keswick Drive
Area	Edmonton
Subdivision	Keswick Area
City	Edmonton
County	ALBERTA
Province	AB
Postal Code	T6W 4V8

### **Amenities**

Amenities	Ceiling 9 ft., Deck, See Remarks
Parking	Double Garage Detached

### **Interior**

Interior Features	ensuite bathroom
Appliances	Garage Control, Garage Opener, See Remarks
Heating	Forced Air-1, Natural Gas
Stories	2
Has Basement	Yes
Basement	Full, Unfinished

### **Exterior**

Exterior	Wood, Stone, Vinyl
Exterior Features	Airport Nearby, Playground Nearby, Public Transportation, Schools, Shopping Nearby, Stream/Pond
Roof	Asphalt Shingles
Construction	Wood, Stone, Vinyl
Foundation	Concrete Perimeter

### **Additional Information**

Date Listed	March 20th, 2025
-------------	------------------

Days on Market	32
Zoning	Zone 56
HOA Fees	1
HOA Fees Freq.	Annually

DATA IS DEEMED RELIABLE BUT IS NOT GUARANTEED ACCURATE BY THE REALTORS® ASSOCIATION OF EDMONTON. COPYRIGHT 2025 BY THE REALTORS® ASSOCIATION OF EDMONTON. ALL RIGHTS RESERVED. Trademarks are owned or controlled by the Canadian Real Estate Association (CREA) and identify real estate professionals who are members of CREA (REALTOR®, REALTORS®) and/or the quality of services they provide (MLS®, Multiple Listing Service®)

Listing information last updated on April 21st, 2025 at 7:32pm MDT