

\$139,900 - 305 8215 83 Avenue, Edmonton

MLS® #E4426191

\$139,900

2 Bedroom, 1.50 Bathroom, 864 sqft
Condo / Townhouse on 0.00 Acres

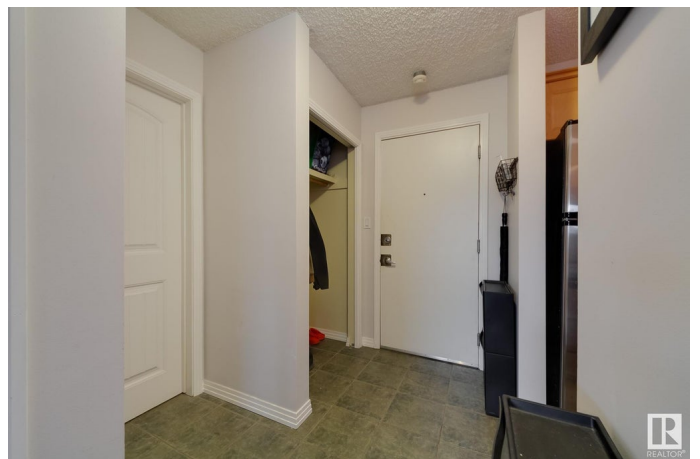
Idylwylde, Edmonton, AB

STEPS from the LRT! Attention investors and first time home buyers, this TOP FLOOR, 2 bedroom and 1.5 bathroom in Bonnie Doon Place is move in ready. This RENOVATED unit features a galley kitchen with newer cabinets, granite countertops and all stainless steel appliances (yes there's a built-in dishwasher). Spacious dining room easily fits a 6-person table, large south facing living room with patio door access to the balcony. Your primary suite is tucked away on one side of the unit, with your 2-piece ensuite and your second bedroom is on the other side of the unit and adjacent to your 4-piece bath. Engineered hardwood and ceramic tile flooring through out - no carpet. IN-SUITE LAUNDRY and in-suite storage room. Across the street is Bonnie Doon Mall and LRT stop. Quick access to: Mill Creek, Whyte Ave, UofA, Downtown and the River Valley. Assigned surface stall (with plug in) and visitor parking. Sorry, NO pets allowed in the Complex.

Built in 1968

Essential Information

MLS® #	E4426191
Price	\$139,900
Bedrooms	2
Bathrooms	1.50



Full Baths	1
Half Baths	1
Square Footage	864
Acres	0.00
Year Built	1968
Type	Condo / Townhouse
Sub-Type	Lowrise Apartment
Style	Single Level Apartment
Status	Active

Community Information

Address	305 8215 83 Avenue
Area	Edmonton
Subdivision	Idylwylde
City	Edmonton
County	ALBERTA
Province	AB
Postal Code	T6J 0Z7

Amenities

Amenities	Parking-Visitor, Patio, Storage-In-Suite, See Remarks
Parking Spaces	1
Parking	Stall

Interior

Interior Features	ensuite bathroom
Appliances	Dishwasher-Built-In, Microwave Hood Fan, Refrigerator, Stacked Washer/Dryer, Stove-Electric, Window Coverings
Heating	Baseboard, Natural Gas
# of Stories	3
Stories	3
Has Basement	Yes
Basement	None, No Basement

Exterior

Exterior	Wood, Stucco
Exterior Features	Public Transportation, Schools, Shopping Nearby, See Remarks
Roof	Tar & Gravel
Construction	Wood, Stucco

Foundation Concrete Perimeter

Additional Information

Date Listed March 18th, 2025

Days on Market 34

Zoning Zone 18

Condo Fee \$658

DATA IS DEEMED RELIABLE BUT IS NOT GUARANTEED ACCURATE BY THE REALTORS® ASSOCIATION OF EDMONTON. COPYRIGHT 2025 BY THE REALTORS® ASSOCIATION OF EDMONTON. ALL RIGHTS RESERVED. Trademarks are owned or controlled by the Canadian Real Estate Association (CREA) and identify real estate professionals who are members of CREA (REALTOR®, REALTORS®) and/or the quality of services they provide (MLS®, Multiple Listing Service®)

Listing information last updated on April 21st, 2025 at 7:32pm MDT