

## \$234,900 - 143 1520 Hammond Gate Gate, Edmonton

MLS® #E4426035

**\$234,900**

2 Bedroom, 2.00 Bathroom, 1,020 sqft  
Condo / Townhouse on 0.00 Acres

The Hamptons, Edmonton, AB

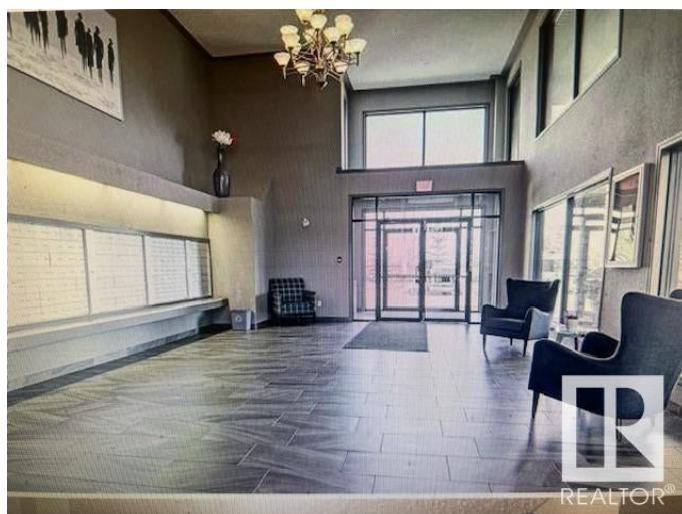
SELLER IS WILLING TO DO OWNER  
FINANCING.

GREAT BUILDING! LARGE 2  
BEDROOM CONDO WITH ALL-YEAR  
ROUND SHELTERED UNDERGROUND  
PARKING FOR 2 CARS, 2- 4 PIECE  
BATHROOMS, INCLUDING 1 ENSUITE,  
WARM UNDERFLOOR HEATING, NICE  
EXPRESSO WOOD KITCHEN WITH AN  
ISLAND, STAINLESS STEEL APPLIANCES,  
CLOSE TO SHOPPING AND ANTHONY  
HENDAY. GREAT INVESTMENT! SELLER IS  
GIVING NEW PAINT JOB.

Built in 2008

### Essential Information

MLS® #	E4426035
Price	\$234,900
Bedrooms	2
Bathrooms	2.00
Full Baths	2
Square Footage	1,020
Acres	0.00
Year Built	2008
Type	Condo / Townhouse
Sub-Type	Lowrise Apartment
Style	Single Level Apartment



Status	Active
--------	--------

## Community Information

Address	143 1520 Hammond Gate Gate
Area	Edmonton
Subdivision	The Hamptons
City	Edmonton
County	ALBERTA
Province	AB
Postal Code	T6M 0J4

## Amenities

Amenities	Parking-Visitor
Parking	Tandem, Underground

## Interior

Interior Features	ensuite bathroom
Appliances	Dishwasher-Built-In, Dryer, Refrigerator, Stove-Electric
Heating	In Floor Heat System, Natural Gas
# of Stories	4
Stories	1
Has Basement	Yes
Basement	None, No Basement

## Exterior

Exterior	Wood, Brick, Vinyl
Exterior Features	Backs Onto Park/Trees, Fenced, Flat Site, Park/Reserve
Roof	Asphalt Shingles
Construction	Wood, Brick, Vinyl
Foundation	Concrete Perimeter

## Additional Information

Date Listed	March 16th, 2025
Days on Market	35
Zoning	Zone 58
Condo Fee	\$537

DATA IS DEEMED RELIABLE BUT IS NOT GUARANTEED ACCURATE BY THE REALTORS® ASSOCIATION OF EDMONTON. COPYRIGHT 2025 BY THE REALTORS® ASSOCIATION OF EDMONTON. ALL RIGHTS RESERVED.Trademarks are owned or controlled by the Canadian Real Estate Association (CREA) and identify real estate professionals who are members of CREA (REALTOR®, REALTORS®) and/or the quality of services they

provide (MLS® , Multiple Listing Service®)  
Listing information last updated on April 20th, 2025 at 12:47pm MDT