

Courtesy Of Jeff D Jackson Of Bode

\$719,900 - 7211 182 Avenue, Edmonton

MLS® #E4420500

\$719,900

4 Bedroom, 3.00 Bathroom, 2,307 sqft

Single Family on 0.00 Acres

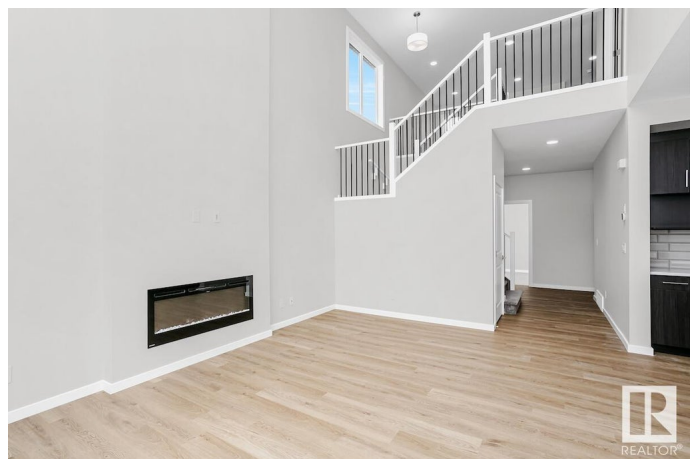
Crystallina Nera East, Edmonton, AB

Welcome to the Priya K model by Bedrock Homes—a modern 4-bedroom, 3-bathroom front drive home offering 2200+ sq ft of stylish, functional space in the desirable Crystallina community. This thoughtfully designed home features a bright open-to-above main floor with a cozy 50" LED electric fireplace, bedroom with a full bathroom, a gourmet kitchen with 41" upper cabinets, quartz countertops, and a premium Samsung stainless steel appliance package. Upstairs, discover a central bonus room, second-floor laundry, and french doors leading to a primary bedroom complete with a spa-like ensuite which boasts a soaker tub, stand-up shower, dual vanities, and MUCH MORE. With a double attached garage, this move-in-ready home is perfect for families looking for a blend of comfort and cutting-edge technology in a great neighborhood with easy access to amenities.

Built in 2024

Essential Information

MLS® #	E4420500
Price	\$719,900
Bedrooms	4
Bathrooms	3.00
Full Baths	3
Square Footage	2,307



Acres	0.00
Year Built	2024
Type	Single Family
Sub-Type	Detached Single Family
Style	2 Storey
Status	Active

Community Information

Address	7211 182 Avenue
Area	Edmonton
Subdivision	Crystallina Nera East
City	Edmonton
County	ALBERTA
Province	AB
Postal Code	T5Z 0J1

Amenities

Amenities	No Animal Home, No Smoking Home, See Remarks
Parking Spaces	4
Parking	Double Garage Attached

Interior

Interior Features	ensuite bathroom
Appliances	Dishwasher-Built-In, Microwave Hood Fan, Refrigerator, Stove-Electric
Heating	Forced Air-1, Natural Gas
Fireplace	Yes
Fireplaces	Insert
Stories	2
Has Basement	Yes
Basement	Full, Unfinished

Exterior

Exterior	Wood, Fiber Cement, Stone, Vinyl
Exterior Features	Park/Reserve, Playground Nearby, Schools, Shopping Nearby
Roof	Asphalt Shingles
Construction	Wood, Fiber Cement, Stone, Vinyl
Foundation	Concrete Perimeter

Additional Information

Date Listed February 5th, 2025

Days on Market 37

Zoning Zone 28

DATA IS DEEMED RELIABLE BUT IS NOT GUARANTEED ACCURATE BY THE REALTORS® ASSOCIATION OF EDMONTON. COPYRIGHT 2025 BY THE REALTORS® ASSOCIATION OF EDMONTON. ALL RIGHTS RESERVED. Trademarks are owned or controlled by the Canadian Real Estate Association (CREA) and identify real estate professionals who are members of CREA (REALTOR®, REALTORS®) and/or the quality of services they provide (MLS®, Multiple Listing Service®)

Listing information last updated on March 14th, 2025 at 9:32am MDT