

## \$924,900 - 121 Weaver Drive, Edmonton

MLS® #E4420004

**\$924,900**

4 Bedroom, 2.50 Bathroom, 2,911 sqft

Single Family on 0.00 Acres

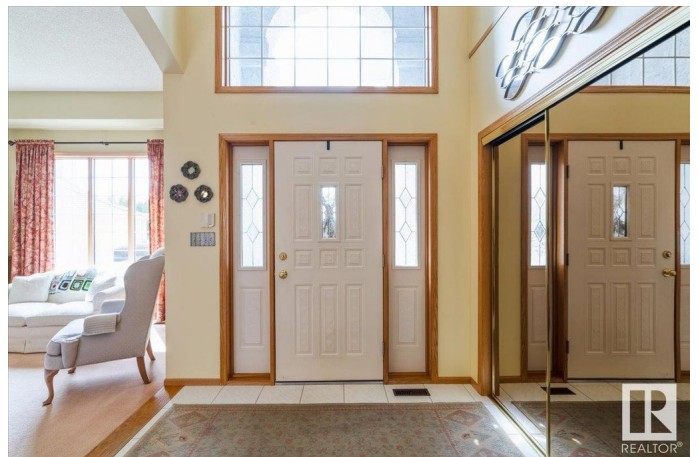
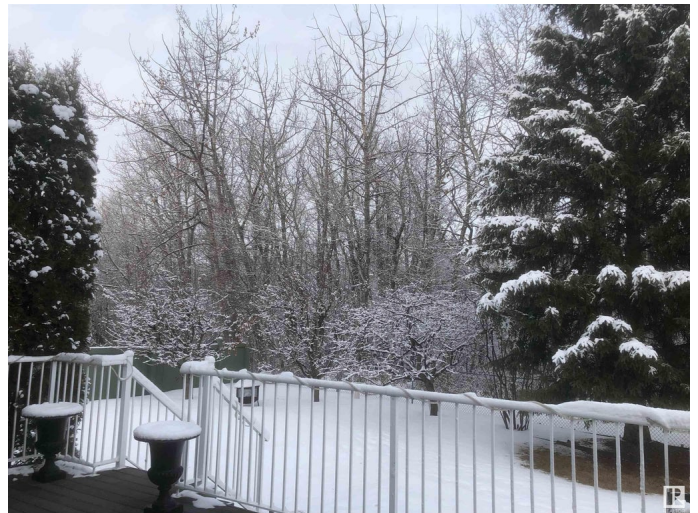
Wedgewood Heights, Edmonton, AB

Backing onto popular Wedgewood Ravine ! Private location with a huge pie lot located on quiet cul-de-sac . Yard has been meticulously maintained with Apple and plum trees, low maintenance private deck is ideal for summer BBQ. Original owners have lovingly maintained this home . Formal living/Dining room with vaulted ceilings. Kitchen features large island, double oven, lots of cupboard space and a breakfast nook that can comfortably accommodate the whole family. Family room is open to kitchen area and has F/P. 4 bedrooms upstairs that includes a huge master with a walk in closet and 5pce ensuite. Both the Furnace and Roof have been upgraded, basement is full and open for your personal touches. Triple attached garage. If you have been searching for the ideal family home and location STOP you found it.

Built in 1991

### Essential Information

MLS® #	E4420004
Price	\$924,900
Bedrooms	4
Bathrooms	2.50
Full Baths	2
Half Baths	1
Square Footage	2,911



Acres	0.00
Year Built	1991
Type	Single Family
Sub-Type	Detached Single Family
Style	2 Storey
Status	Active

### Community Information

Address	121 Weaver Drive
Area	Edmonton
Subdivision	Wedgewood Heights
City	Edmonton
County	ALBERTA
Province	AB
Postal Code	T6M 2J3

### Amenities

Amenities	Air Conditioner, Deck, No Smoking Home, See Remarks
Parking	Triple Garage Attached

### Interior

Interior Features	ensuite bathroom
Appliances	Air Conditioning-Central, Dishwasher-Built-In, Dryer, Garage Control, Garage Opener, Refrigerator, Stove-Countertop Electric, Washer, Window Coverings, Oven Built-In-Two
Heating	Forced Air-2, Natural Gas
Fireplace	Yes
Fireplaces	Mantel, Tile Surround, See Remarks
Stories	2
Has Basement	Yes
Basement	Full, Unfinished

### Exterior

Exterior	Wood, Stucco
Exterior Features	Cul-De-Sac, Fenced, Fruit Trees/Shrubs, Landscaped, Park/Reserve, Private Setting, Ravine View, See Remarks
Roof	Cedar Shakes
Construction	Wood, Stucco
Foundation	Concrete Perimeter

**Additional Information**

Date Listed	February 1st, 2025
Days on Market	77
Zoning	Zone 20
HOA Fees	350
HOA Fees Freq.	Annually

DATA IS DEEMED RELIABLE BUT IS NOT GUARANTEED ACCURATE BY THE REALTORS® ASSOCIATION OF EDMONTON. COPYRIGHT 2025 BY THE REALTORS® ASSOCIATION OF EDMONTON. ALL RIGHTS RESERVED.Trademarks are owned or controlled by the Canadian Real Estate Association (CREA) and identify real estate professionals who are members of CREA (REALTOR®, REALTORS®) and/or the quality of services they provide (MLS®, Multiple Listing Service®)

Listing information last updated on April 19th, 2025 at 3:02am MDT